



Last year, 42 different unions, businesses providing services to unions, and community organizations placed inexpensive ads in the Mayworks program guide. Their advertisements reached many labour and community activists who attended Mayworks events and performances throughout the festival.

P U B L I C A T I O N D E T A I L S

7.5" (width) x 10" (height) / black & white / full colour cover

Receipt of artwork deadline: WEDNESDAY, FEBRUARY 7, 2018

A D S I Z E D I M E N S I O N S

Full Page	6.5" (width) x 9.5" (height)	vertical placement only	\$1,000
Half Page	6.5" (width) x 4.5" (height)	horizontal placement	\$500
	3.25" (width) x 9.5" (height)	vertical placement	\$500
Quarter Page	3.25" (width) x 4.5" (height)	vertical placement only	\$300



A R T W O R K S P E C I F I C A T I O N S

File Formats Options:

- 1) PDF
(High Resolution Print Quality)

- 2) Illustrator EPS files
(with all fonts embedded and converted to outlines)

- 3) Photoshop bitmap files
(EPS or TIFF)
 - all image files should be saved at a resolution of 300 DPI
 - bitmap images files containing text smaller than 7pt should be saved at 600dpi
 - JPEG files are acceptable but should be saved with highest compression

All ads must be submitted in camera-ready digital format.
All ads must be in grayscale, or black & white, at 300dpi / 133lpi.

File Submission:

Digital ad files can be submitted on disk or sent via email to:

JEANETTE BODY
JBODY@MAYWORKS.CA

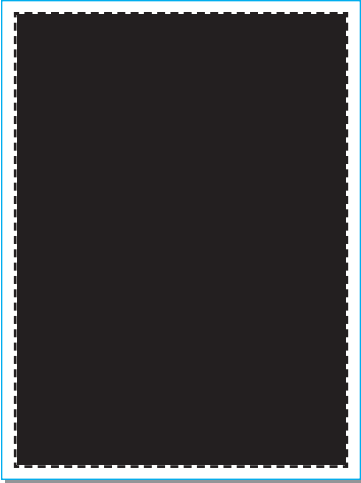
Hardcopies can be mailed to:
Mayworks, 25 Cecil Street, Toronto, Ontario, M5T 1N1

Additional Notes:

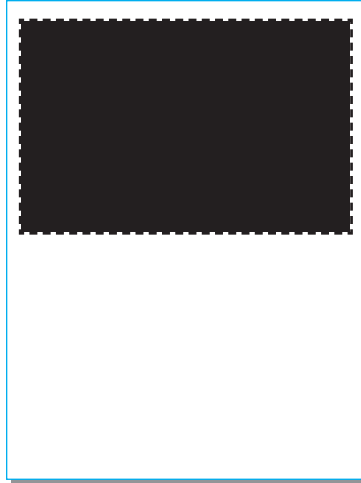
Ads submitted in formats other than those indicated above might be subject to additional set-up and design fees. If an existing ad requires simple alteration there will be an additional charge of \$30, and if an ad requires assembling with elements provided, the charge is \$60. In instances where technical errors are found with digital submissions, hardcopies can be scanned and used as a substitute; however, resolution issues might occur.



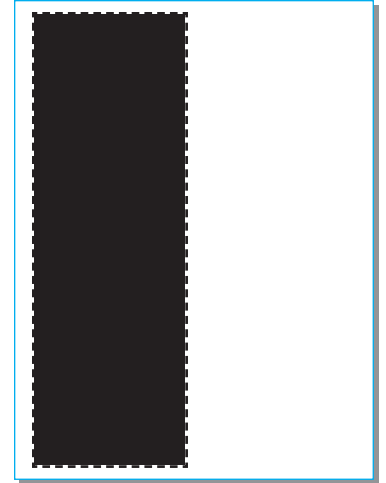
AD PLACEMENT



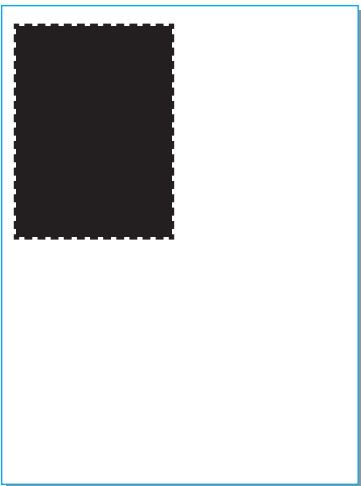
Full Page
6.5" (width) x 9.5" (height)
vertical placement only



Half Page
6.5" (width) x 4.5" (height)
horizontal placement



Half Page
3.25" (width) x 9.5" (height)
vertical placement



Quarter Page
3.25" (width) x 4.5" (height)
vertical placement only

Full Page
6.5" (width) x 9.5" (height)
vertical placement only

Half Page
6.5" (width) x 4.5" (height)
horizontal placement

Quarter Page
3.25" (width) x 4.5" (height)
vertical placement only

Quarter Page
3.25" (width) x 4.5" (height)
vertical placement only

Half Page
3.25" (width) x 9.5" (height)
vertical placement

Quarter Page
3.25" (width) x 4.5" (height)
vertical placement only

Quarter Page
3.25" (width) x 4.5" (height)
vertical placement only

Quarter Page
3.25" (width) x 4.5" (height)
vertical placement only

Quarter Page
3.25" (width) x 4.5" (height)
vertical placement only

Quarter Page
3.25" (width) x 4.5" (height)
vertical placement only

Quarter Page
3.25" (width) x 4.5" (height)
vertical placement only



Full Page

6.5" (width) x 9.5" (height)
vertical placement only



Half Page

6.5" (width) x 4.5" (height)
horizontal placement



Quarter Page

3.25" (width) x 4.5" (height)
vertical placement only



Quarter Page

3.25" (width) x 4.5" (height)
vertical placement only

Half Page

3.25" (width) x 9.5" (height)
vertical placement

Quarter Page

3.25" (width) x 4.5" (height)
vertical placement only

Quarter Page

3.25" (width) x 4.5" (height)
vertical placement only

Quarter Page

3.25" (width) x 4.5" (height)
vertical placement only

Quarter Page

3.25" (width) x 4.5" (height)
vertical placement only

Quarter Page

3.25" (width) x 4.5" (height)
vertical placement only

Quarter Page

3.25" (width) x 4.5" (height)
vertical placement only